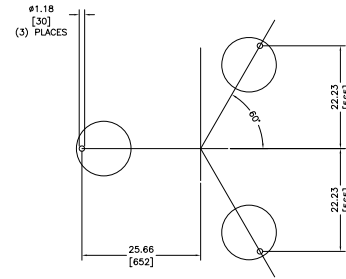
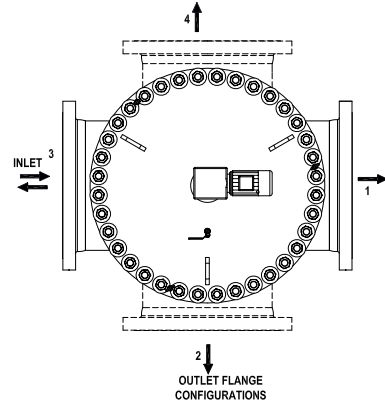
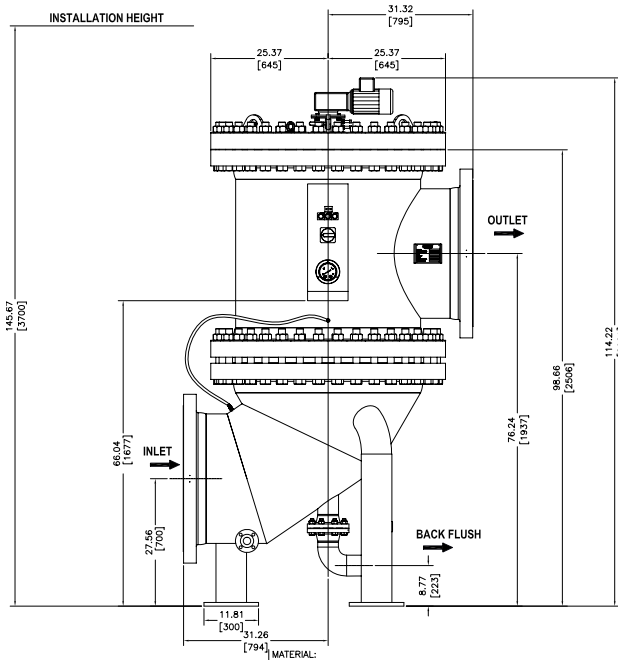
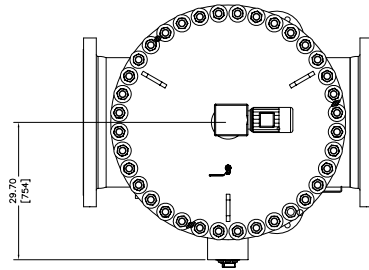


# RF3-7

# Backflushing Filter AutoFilt® RF3

13,200-  
22,000  
gpm  
50,000-  
83,350  
L/min

87 psi  
6 bar

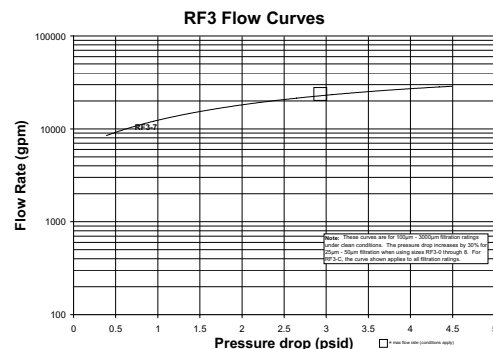


- NOTES:  
1. Metric dimensions in ( ).  
2. Drawings may change without notice. Contact factory for certified drawings.

## Specifications

<b>Flange Size:</b>	28"ANSI
<b>Flow Range:</b>	13,200-22,000 gpm (50,000-83,350 L/min)
<b>Working Pressure:</b>	87 psi (6 bar)
<b>Max. Working Temperature:</b>	194°F (90°C)
<b>Empty Weight:</b>	4300 lbs. (1950 kg)
<b>Housing Volume:</b>	358 gallons (1355 L)
<b>Filter Area:</b>	16,450 in. <sup>2</sup> (106,100 cm <sup>2</sup> )
<b>No. of Filter Elements</b>	44
<b>Backflush Flange Size:</b>	4"ANSI
<b>Backflush Volume:</b>	147 gallons (555 L/cycle) Electric-Pneumatic Controls (EPT) 735 gallons (2775 L/cycle) All Electric Controls (EU)

## Pressure Drop Information Based on Flow Rate and Viscosity



## How to Build a Valid Model Number for a RF3:

BOX 1	BOX 2	BOX 3	BOX 4	BOX 5	BOX 6	BOX 7	BOX 8	BOX 9	BOX 10	BOX 11
RF3	7									

Example: NOTE: One option per box

BOX 1	BOX 2	BOX 3	BOX 4	BOX 5	BOX 6	BOX 7	BOX 8	BOX 9	BOX 10	BOX 11
RF3	7	EPT8	NG	N	5	3	2	KS1000	7	ASME

= RF3-7-EPT8-NG-N-5-3-2/ KS1000-7-ASME

BOX 1	BOX 2	BOX 3	BOX 4	BOX 5
<b>Filter Series</b>	<b>Filter Size</b>	<b>Drive Control / Connecting Voltage</b>	<b>Housing Material and Coating</b>	<b>Shut-Off Valve Material</b>
RF3	7	EPT = Electric pneumatic cycle control, Δp dependent EU = Electric control, Δp dependent PT = Pneumatic cyclic control, Δp dependent PTZ = Pneumatic cyclic timed control 7 = 3X415V/N/PE 60Hz 8 = 3X460V/X/PE 60Hz B = 3X575V/X/PE 60Hz E = 1X230V/N/PE 60Hz F = 1X110V/N/PE 60Hz	N = Standard Steel 1.0038, outside primed NM = Standard Steel 1.0038, outside primed, inside metallogal painted NG = Standard Steel 1.0038, outside primed, inside rubber coated E = Stainless Steel 1.4571 A = With ANSI-flanged, add. A at the end	N = Standard Steel E = Stainless Steel

BOX 6	BOX 7	BOX 8	BOX 9
<b>Differential Pressure Gauge</b>	<b>Flange Position</b>	<b>Modification Number</b>	<b>Element Set</b>
1 = Pressure Chamber, Aluminum 3.258302 2 = Pressure Chamber, Stainless Steel 1.4305 3 = With Chemical Seal Stainless Steel 316TI 5 = HDA 4700 Stainless Steel 6 = HDA 4300 Duplex Stainless Steel	1 = Filter outlet opposite filter inlet (standard) 2 = Filter outlet offset 90° clockwise to standard 3 = Filter outlet offset by 180° clockwise to standard 4 = Filter outlet offset by 270° clockwise to standard	2 = Latest version supplied by factory	KD25 = Conical SuperMesh™ KD40 = Conical SuperMesh™ KS50 = Conical Slotted Tubes KS100 = Conical Slotted Tubes KS200 = Conical Slotted Tubes KS300 = Conical Slotted Tubes KS400 = Conical Slotted Tubes KS500 = Conical Slotted Tubes KS1000 = Conical Slotted Tubes KS1500 = Conical Slotted Tubes KS2000 = Conical Slotted Tubes KS2500 = Conical Slotted Tubes KS3000 = Conical Slotted Tubes

BOX 10	BOX 11
<b>Size of Element Set</b>	<b>Vessel Certification</b>
7	Omit = Standard Version ASME = ASME Version

## Filter Model Number Selection

- RF3-C
- RF3-0
- RF3-1
- RF3-2
- RF3-2.5
- RF3-3
- RF3-4
- RF3-5
- RF3-6
- RF3-7**
- RF3-8
- RF5
- RF7
- RF10
- RF4
- RF4-1
- RF4-2
- RF12
- BTU
- ATF
- PLF1
- PVD

NOTES:  
 Box 3. Needs to have control type and voltage selected ex. EPT8.  
 Box 4. can contain two options ex. NMA. If ANSI flanges are not specified DIN style will be provided.