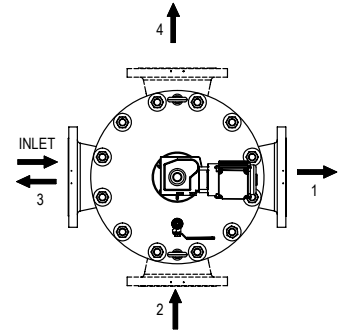
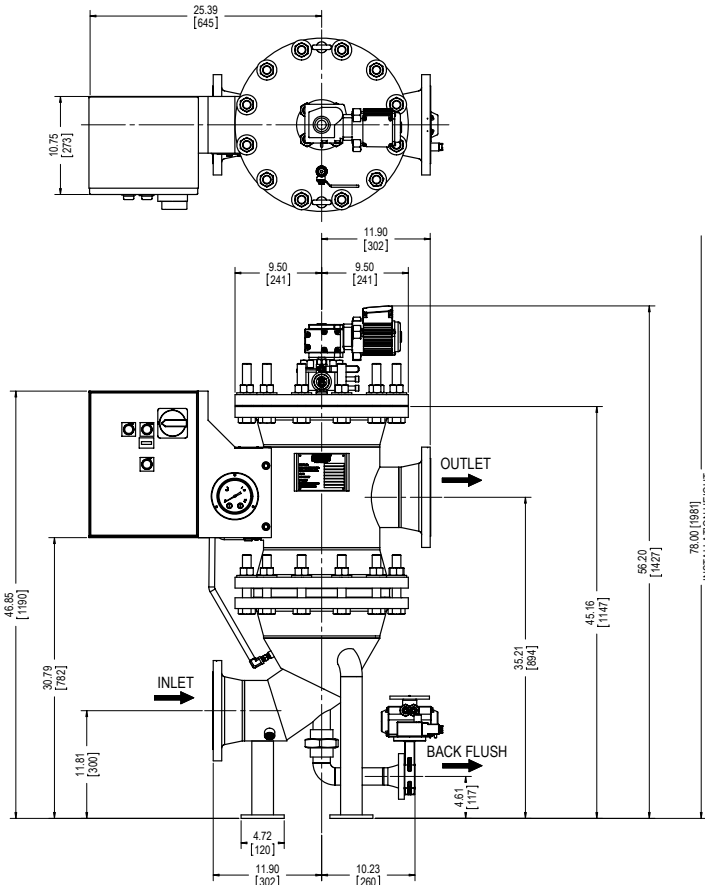
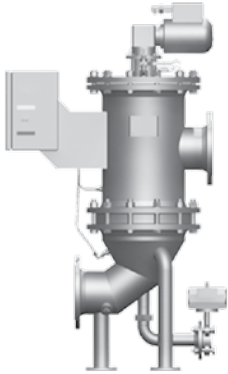


RF3-1

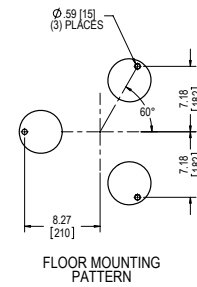
Backflushing Filter AutoFilt® RF3

395-1120
gpm
1500-4235
L/min

150 psi
10 bar



OUTLET FLANGE CONFIGURATIONS



FLOOR MOUNTING PATTERN

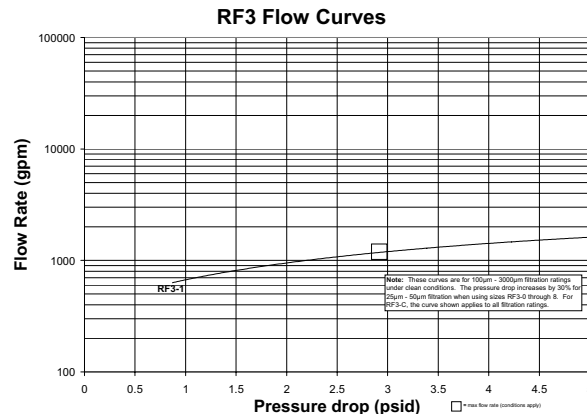
NOTES:

1. Metric dimensions in ().
2. Drawings may change without notice. Contact factory for certified drawings.

Specifications

| | |
|----------------------------------|---|
| Flange Size: | 6"ANSI |
| Flow Range: | 395-1120 gpm (420-1800 L/min) |
| Working Pressure: | 150 psi (10 bar) |
| Max. Working Temperature: | 194°F (90°C) |
| Empty Weight: | 530 lbs. (240 kg) |
| Housing Volume: | 16 gallons (60 L) |
| Filter Area: | 960 in. ² (6190 cm ²) |
| No. of Filter Elements | 6 |
| Backflush Flange Size: | 1 1/2"ANSI |
| Backflush Volume: | 9 gallons (34 L/cycle) Electric-Pneumatic Controls (EPT) 45 gallons (170 L/cycle) All Electric Controls (EU) |

Pressure Drop Information Based on Flow Rate and Viscosity



Backflushing Filter AutoFit® RF3

RF3-1

How to Build a Valid Model Number for a RF3:

| | | | | | | | | | | |
|-------|-------|-------|-------|-------|-------|-------|-------|-------|--------|--------|
| BOX 1 | BOX 2 | BOX 3 | BOX 4 | BOX 5 | BOX 6 | BOX 7 | BOX 8 | BOX 9 | BOX 10 | BOX 11 |
| RF3 | 1 | | | | | | | | | |

Example: NOTE: One option per box

| | | | | | | | | | | |
|-------|-------|-------|-------|-------|-------|-------|-------|--------|--------|--------|
| BOX 1 | BOX 2 | BOX 3 | BOX 4 | BOX 5 | BOX 6 | BOX 7 | BOX 8 | BOX 9 | BOX 10 | BOX 11 |
| RF3 | 1 | EPT8 | NG | N | 5 | 3 | 2 | KS1000 | 1 | ASME |

= RF3-1-EPT8-NG-N-5-3-2/ KS1000-1-ASME

| BOX 1 | BOX 2 | BOX 3 | BOX 4 | BOX 5 |
|----------------------|--------------------|--|--|---|
| Filter Series | Filter Size | Drive Control / Connecting Voltage | Housing Material and Coating | Shut-Off Valve Material |
| RF3 | 1 | EPT = Electric pneumatic cycle control, Δp dependent EU = Electric control, Δp dependent PT = Pneumatic cyclic control, Δp dependent PTZ = Pneumatic cyclic timed control + select one below: 7 = 3X415V/N/PE 60Hz 8 = 3X460V/X/PE 60Hz B = 3X575V/X/PE 60Hz E = 1X230V/N/PE 60Hz F = 1X110V/N/PE 60Hz | N = Standard Steel 1.0038, outside primed NM = Standard Steel 1.0038, outside primed, inside metallogal painted NG = Standard Steel 1.0038, outside primed, inside rubber coated E = Stainless Steel 1.4571 A = with ANSI-flanged, add. A at the end | N = Standard Steel E = Stainless Steel |

| BOX 6 | BOX 7 | BOX 8 | BOX 9 |
|--|--|--|---|
| Differential Pressure Gauge | Flange Position | Modification Number | Element Set |
| 1 = Pressure Chamber, Aluminum 3.258302 2 = Pressure Chamber, Stainless Steel 1.4305 3 = With Chemical Seal Stainless Steel 316TI 5 = HDA 4700 Stainless Steel 6 = HDA 4300 Duplex Stainless Steel | 1 = Filter outlet opposite filter inlet (standard) 2 = Filter outlet offset 90° clockwise to standard 3 = Filter outlet offset by 180° clockwise to standard 4 = Filter outlet offset by 270° clockwise to standard | 2 = Latest version supplied by factory | KD25 = Conical SuperMesh™ KD40 = Conical SuperMesh™ KS50 = Conical Slotted Tubes KS100 = Conical Slotted Tubes KS200 = Conical Slotted Tubes KS300 = Conical Slotted Tubes KS400 = Conical Slotted Tubes KS500 = Conical Slotted Tubes KS1000 = Conical Slotted Tubes KS1500 = Conical Slotted Tubes KS2000 = Conical Slotted Tubes KS2500 = Conical Slotted Tubes KS3000 = Conical Slotted Tubes |

| BOX 10 | BOX 11 |
|----------------------------|--|
| Size of Element Set | Vessel Certification |
| 1 | Omit = Standard Version ASME = ASME Version |

Filter Model Number Selection

RF3-C

RF3-0

RF3-1

RF3-2

RF3-2.5

RF3-3

RF3-4

RF3-5

RF3-6

RF3-7

RF3-8

RF5

RF7

RF10

RF4

RF4-1

RF4-2

RF12

BTU

ATF

PLF1

PVD

NOTES:
 Box 3. Needs to have control type and voltage selected ex. EPT8.
 Box 4. can contain two options ex. NMA. If ANSI flanges are not specified DIN style will be provided.
 note.