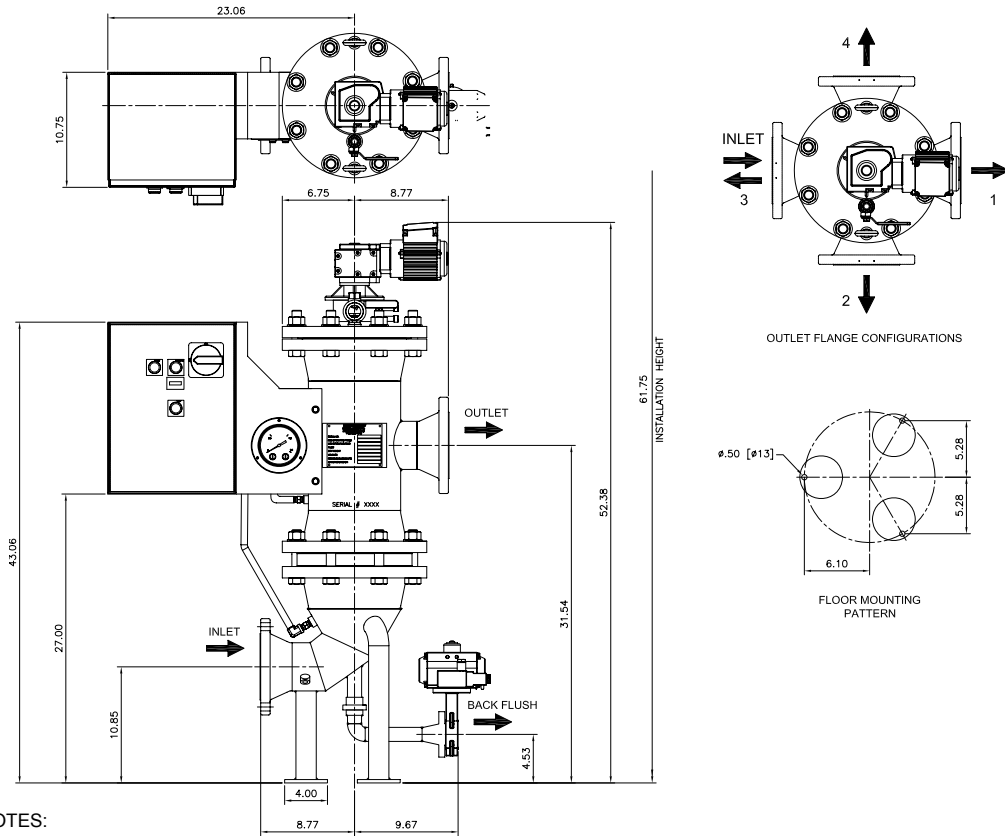
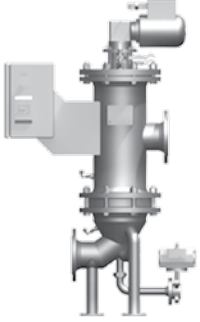


110-500 gpm  
420-1880  
L/min

150 psi  
10 bar



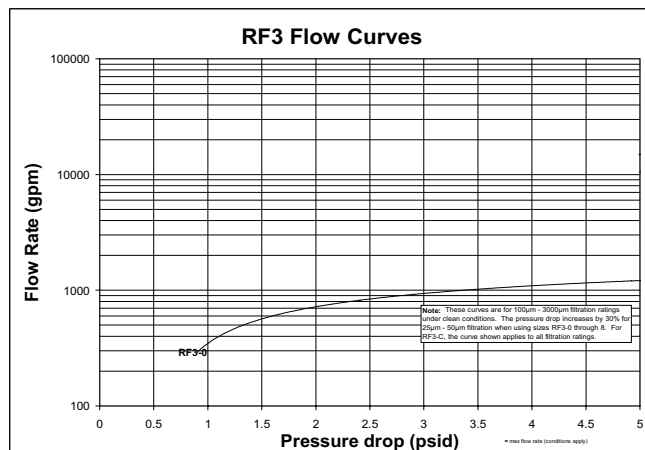
**NOTES:**

1. Metric dimensions in ( ).
2. Drawings may change without notice. Contact factory for certified drawings.

## Specifications

<b>Flange Size:</b>	4"ANSI
<b>Flow Range:</b>	110-500 gpm (420-1800 L/min)
<b>Working Pressure:</b>	150 psi (10 bar)
<b>Max. Working Temperature:</b>	194°F (90°C)
<b>Empty Weight:</b>	320 lbs. (145 kg)
<b>Housing Volume:</b>	7 gallons (25 L)
<b>Filter Area:</b>	590 in. <sup>2</sup> (3810 cm <sup>2</sup> )
<b>No. of Filter Elements</b>	6
<b>Backflush Flange Size:</b>	1"ANSI
<b>Backflush Volume:</b>	7 gallons (26 L/cycle) Electric-Pneumatic Controls (EPT) 35 gallons (132 L/cycle) All Electric Controls (EU)

## Pressure Drop Information Based on Flow Rate and Viscosity



# Backflushing Filter AutoFit® RF3

# RF3-0

## How to Build a Valid Model Number for a RF3:

BOX 1	BOX 2	BOX 3	BOX 4	BOX 5	BOX 6	BOX 7	BOX 8	BOX 9	BOX 10	BOX 11
RF3	0									

Example: NOTE: One option per box

BOX 1	BOX 2	BOX 3	BOX 4	BOX 5	BOX 6	BOX 7	BOX 8	BOX 9	BOX 10	BOX 11
RF3	0	EPT8	NG	N	5	3	2	KS1000	0	ASME

= RF3-0-EPT8-NG-N-5-3-2/ KS1000-0-ASME

BOX 1	BOX 2	BOX 3	BOX 4	BOX 5	BOX 6	BOX 7	BOX 8	BOX 9	BOX 10	BOX 11
<b>Filter Series</b> RF3	<b>Filter Size</b> 0	<b>Drive Control / Connecting Voltage</b> EPT = Electric pneumatic cycle control, Δp dependent EU = Electric control, Δp dependent PT = Pneumatic cyclic control, Δp dependent PTZ = Pneumatic cyclic timed control 7 = 3X415V/N/PE 60Hz 8 = 3X460V/X/PE 60Hz B = 3X575V/X/PE 60Hz E = 1X230V/N/PE 60Hz F = 1X110V/N/PE 60Hz	<b>Housing Material and Coating</b> N = Standard steel 1.0038, outside primed NM = Standard Steel 1.0038, outside primed, inside metallogal painted NG = Standard Steel 1.0038, outside primed, inside rubber coated E = Stainless Steel 1.4571 A = with ANSI-flanged, add. A at the end	<b>Shut-Off Valve Material</b> N = Standard Steel E = Stainless Steel	<b>Differential Pressure Gauge</b> 1 = Pressure Chamber, Aluminum 3.258302 2 = Pressure Chamber, Stainless Steel 1.4305 3 = With Chemical Seal Stainless Steel 316TI 5 = HDA 4700 Stainless Steel 6 = HDA 4300 Duplex Stainless Steel	<b>Flange Position</b> 1 = Filter outlet opposite filter inlet (standard) 2 = Filter outlet offset 90° clockwise to standard 3 = Filter outlet offset by 180° clockwise to standard 4 = Filter outlet offset by 270° clockwise to standard	<b>Modification Number</b> 2 = Latest version supplied by factory	<b>Element Set</b> KD25 = Conical SuperMesh™ KD40 = Conical SuperMesh™ KS50 = Conical Slotted Tubes KS100 = Conical Slotted Tubes KS200 = Conical Slotted Tubes KS300 = Conical Slotted Tubes KS400 = Conical Slotted Tubes KS500 = Conical Slotted Tubes KS1000 = Conical Slotted Tubes KS1500 = Conical Slotted Tubes KS2000 = Conical Slotted Tubes KS2500 = Conical Slotted Tubes KS3000 = Conical Slotted Tubes	<b>Size of Element Set</b> 0	<b>Vessel Certification</b> Omit = Standard Version ASME = ASME Version

**Filter Model Number Selection**

- RF3-C
- RF3-0**
- RF3-1
- RF3-2
- RF3-2.5
- RF3-3
- RF3-4
- RF3-5
- RF3-6
- RF3-7
- RF3-8
- RF5
- RF7
- RF10
- RF4
- RF4-1
- RF4-2
- RF12
- BTU
- ATF
- PLF1
- PVD

NOTES:  
 Box 3. Needs to have control type and voltage selected ex. EPT8.  
 Box 4. can contain two options ex. NMA.  
 note. If ANSI flanges are not specified DIN style will be provided.