



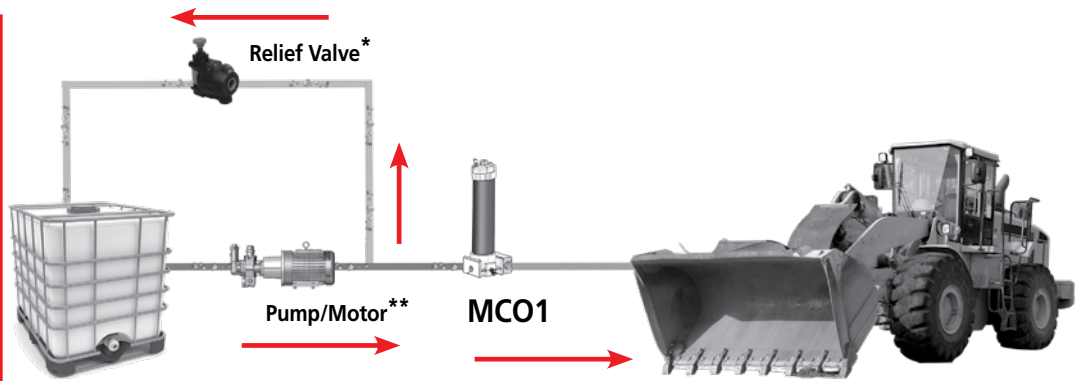
Product Description

- Fail-safe In-Line Mechanical Clean Oil Dispensing Filter rated for 900 psi and 30 gpm
- Ideal for dispensing applications where clean fluid delivery is a must
- Dispensed fluid is filtered or it is returned to the tank
- Field proven to deliver ISO cleanliness levels of 18/15/13 or better in a single pass
- Series filtration with MCO2 and MCO3 filters

Technology

- Housings incorporate a non-bypassing but low cost 150 psi Beta X \geq 1000 rated element
- Low element cost is achieved through the use of a unique proportional valve that, when used with an external relief valve, redirects the flow back to the tank as element DP increases
- As the element loads, the element service life indicator, located on the housing, **indicates** that service is required before the fluid flow begins to return to tank. Unfiltered "dirty" oil cannot pass the filter even if the service life indicator is ignored.
- Fluid Cleanliness Sampling Ports provided for proof of filtration into the system being filled
- Easy to install and designed with top service for easy element service
- Push button bleed valves located on each filter housing

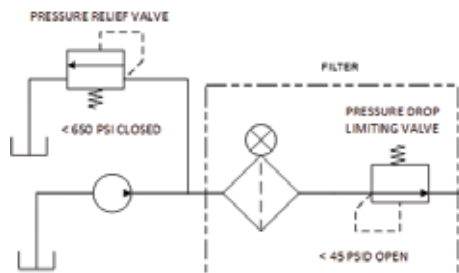
Application Circuit



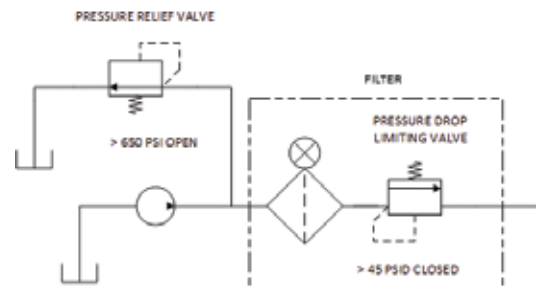
* Product not included in base model pricing.
 ** Product is customer supplied.

Schematics

Normal Operation



"Bypass" Operation



Fail-Safe In-Line Mechanical Clean Oil Dispenser

U.S. Patent 7,604,738 for connecting end cap



CS 1000

CS 1939

CSI-C-11

HY-TRAX®

RBSA

CSM

FCU

MCS

AS

SMU

CTU

EPK

Trouble
Check Plus

HMG2500

HMG4000

ET-100-6

HTB

RFSA

HFS-BC

HFS-15

MFD-BC

MFS, MFD

HY-TRAX®
Retrofit System

MFD-MV

MFS-HV

AMS, AMD

FS

AMFS

KLS, KLD

MCO

AKS, AKD

LSN, LSA, LSW

X Series

OLF Compact

OLF

OLF-P

NxTM

VEU-F

IXU

Triton-A

Triton-E

NAV

SVD01

SVD

OXs

Appendix

Filter Housing Specifications

Flow Rating:	Up to 30 gpm (113 L/min) for 150 SUS (32 cSt) fluids
Max. Operating Pressure:	900 psi (60 bar)
Min. Yield Pressure:	3200 psi (220 bar), per NFPA T2.6.1
Rated Fatigue Pressure:	750 psi (52 bar) per NFPA T2.6.1-R1-2005
Temp. Range:	-20°F to 225°F (-29°C to 107°C)
Bypass Setting:	Non-Bypassing System
Porting Head & Cap:	Cast Aluminum
Element Case:	Steel
Weight of MCO-1K:	21 lbs. (9.5 kg)
Weight of MCO-2K:	32 lbs. (14.5 kg)
Weight of MCO-3K:	43 lbs. (19.5 kg)
Element Change Clearance:	17.50" (445 mm) for KK; 26.5" (673 mm) for 27K

How to Build a Valid Model Number for a Schroeder MCO:

BOX 1	BOX 2	BOX 3	BOX 4	BOX 5	BOX 6	BOX 7	BOX 8	BOX 9	BOX 10
MCO									

Example: NOTE: One option per box

BOX 1	BOX 2	BOX 3	BOX 4	BOX 5	BOX 6	BOX 7	BOX 8	BOX 9	BOX 10
MCO	3	27	G05	G03	G03	V	S	D5	RV

= MCO327G05G03G03VSD5RV

BOX 1	BOX 2	BOX 3	BOX 4
Model	No. of Housings	Element Length	Element Micron Rating First Filter (MCO1, MCO2, MCO3)
MCO	1 2 3	27	G01 = 1 µm Z-Media® (synthetic) G03 = 3 µm Z-Media® (synthetic) G05 = 5 µm Z-Media® (synthetic) G10 = 10 µm Z-Media® (synthetic) G25 = 25 µm Z-Media® (synthetic)

BOX 5	BOX 6
Element Micron Rating Second Filter (MCO2, MCO3)	Element Micron Rating Third Filter (MCO3 Only)
G01 = 1 µm Z-Media® (synthetic) G03 = 3 µm Z-Media® (synthetic) G05 = 5 µm Z-Media® (synthetic) G10 = 10 µm Z-Media® (synthetic) G25 = 25 µm Z-Media® (synthetic)	G01 = 1 µm Z-Media® (synthetic) G03 = 3 µm Z-Media® (synthetic) G05 = 5 µm Z-Media® (synthetic) G10 = 10 µm Z-Media® (synthetic) G25 = 25 µm Z-Media® (synthetic)

BOX 7	BOX 8	BOX 9
Seal Material	Porting	Indicator Options (Only for outlet block)
V = Viton®	S = SAE 20 P = 1 ¼ NPTF	D5 = Visual Pop-up MS10 = Electrical with DIN Connector (male end only) MS11 = Electrical with 12ft. 4-conductor wire MS14 = Supplied with 5-pin Brad Harrison make connector and light (male end)

BOX 10
Relief Valve
Omit = Customer Supplied RV = Schroeder Relief Valve (set at 650 psi)*

*The "RV" option is supplied as a loose item. Users have to install the relief valve within their Hydraulic System.

Model Number Selection

NOTES:

Box 10. An upstream pressure relief valve must be used. Should be no greater than 650 psi.