

FILTRATION SOLUTIONS FOR

RAILROAD APPLICATIONS



Schroeder
INDUSTRIES
Advanced Fluid Conditioning Solutions®

Fluid Condition Monitoring | FCU1310 and CS



FCU1310

CS

- ◆ Fluid Condition Monitoring sensors for real-time measurement of particulate and water contamination in hydraulic fluids
- ◆ Both the FCU1310 and CS1220 utilize an optical sensor and measure particulates in four sizes (>4, >6, >14 and >21 microns).
- ◆ Measurement results are displayed on the LED screen or exported as a contamination code according to ISO 4406:1999 or SAE AS 4059.
- ◆ Mounted on a manifold for flow control with option integration of a water sensor AS1200 for measuring water saturation of fluids.

On-Board Diesel Filters | HDP Series

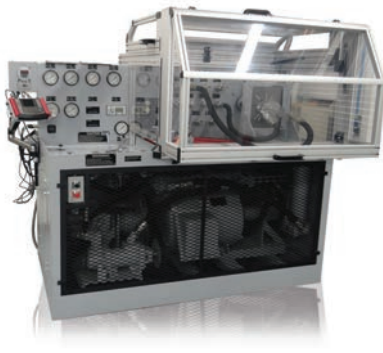


HDP240

HDP 600 with
Electric Pump

- ◆ Wide range of compact filters designed for the most challenging engine applications in the railway industry.
- ◆ Available with fully-automated water drain capabilities, integral electric pumps, and new compact sizes available to suit a variety of needs.
- ◆ High-efficiency, filtration technology designed to protect sensitive modern diesel engine fuel systems.
- ◆ Rugged housings and elements designed for use with today's modern fuels like Biodiesel and Renewable Diesel (HVO).

Hydraulic Test Bench | HTB



HTB

- ◆ The ultimate diagnostic tool, capable of thoroughly testing a vast array of new or rebuilt components (pumps, motors, cylinders and valves) and sub-assemblies prior to their installation in a working system
- ◆ Test bench instrumentation has been designed to make diagnosis fast and accurate, with virtually no requirement for connecting external instruments
- ◆ Every HTB includes efficient Schroeder hydraulic filters to keep the bench oil at optimum cleanliness, providing assurance that newly rebuilt components will not be subjected to harmful levels of dirt

Schroeder Bestfit® Element with Private Label Branding Available



Schroeder Elements

- ◆ Exceptional filtration solutions that can be used in a wide variety of applications
- ◆ Better dirt holding capacities and efficiencies over competitor elements
- ◆ Variety of media grades (synthetic microglass, water removal, anti-stat, etc.)
- ◆ Available for private label branding
- ◆ Over 42,000 cross references on the website

Fluid Conditioning | FS, OLF Compact



MFDBC

FS

OLF
Compact

- ◆ **FS:** The Filtration Station[®] is a mobile filter cart, ideal for maintenance on rail yard equipment in remote rail yard locations. The large semi-pneumatic tires on the unit, along with the rugged frame design, allow for the unit to be easily transported over the rails and through the dirt and stones of rail yard. The FS comes standard with TCM and TWS condition monitoring sensors for real time monitoring and automatic shutdown when target ISO code is reached.
- ◆ **OLF Compact:** The OLF Compact is a small, self-contained filtration system equipped with high efficiency, high capacity elements. It is capable of removing particulate contamination and/or water quickly, conveniently and economically. This off-line system can be used to supplement in-line filters, when adequate turnover cannot be achieved in the system, with flow rates of 1.3 gpm to 4.9 gpm. It is supplied as a ready-to-install off-line unit with integrated pump/motor assembly.
- ◆ **MFDBC:** Compact, low cost cart that is top-ported and provides easy element service. Bar-type Dirt Alarm[®] indicates when filter elements require a change. Hoses and connection tubes included.

Bulk Fuel Filtration | GHPF, GHCF, & BDF



GHPF

GHCF

BDF

- ◆ **GHPF:** A particulate filter designed to fit in place of common high-flow fuel spin-on solutions for dispensing, transfer, or recirculation applications. It is rated for up to 100 gpm through a range of 1 to 25 micron standard high efficiency filter cartridges. Standard features include a D5 indicator and Viton (FKM) seals, as well as a drain plug in the bowl for easier serviceability.
- ◆ **GHCF:** With the same head dimensions as the GHPF, this coalescing filter can replace many of the common absorbing and other coalescing filters available. It is rated for up to 25 gpm with a 5 micron rating and an SAE J1488 water removal efficiency of >95%, protecting today's modern diesel engines from damaging contamination. Standard features include a D5 indicator and Viton (FKM) seals, as well as a sight glass and drain valve in the bowl for water draining and element servicing.
- ◆ **BDF:** The BDF is a pairing of our GHPF and GHCF filter, providing a lower overall cost of operation by extending the service life of the GHCF element. This is ideal for single pass transfer or dispensing where efficiency is critical, or for multiple stage filtration in recirculation applications. Standard features of the GHPF and GHCF are also included.

Hydraulic & Lube | BFT, KF50 and RLT



BFT

KF50

RLT

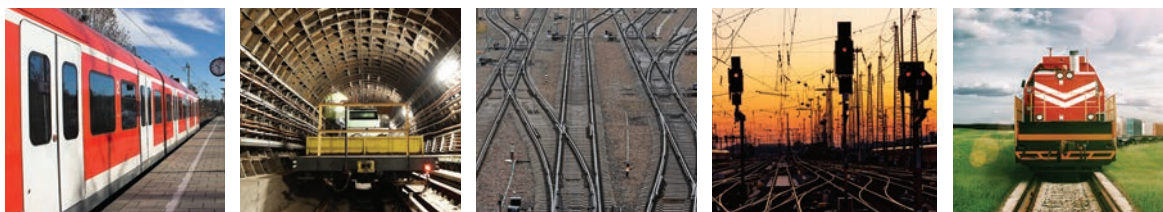
- ◆ **BFT:** Designed for high return line flows of up to 300 gpm, this low pressure, tank mounted filter with 100 psi operating pressure features high performance, synthetic elements with large dirt holding capacities. Available with visual or electrical Dirt Alarm[®] to alert users when element replacement is necessary.
- ◆ **KF50:** A high pressure, base-ported filter with 5,000 psi operating pressure and up to 150 gpm flow. Designed to meet HF4 automotive standard and encourages inventory consolidation through the use of standard K-size elements. Available with test points downstream and/or upstream.
- ◆ **RLT:** Durable, compact, and lightweight, this medium pressure, top-ported filter has 1,000 psi operating pressure and up to 70 gpm flow. Threaded bowl facilitates simple element change outs. Same day shipment model available.



Railroad

Process Filtration | RF9 and LMDP

- ♦ RF9: A low-maintenance, service-friendly fuels and lubrication filter that utilizes unique, patented hydropneumatic back-flushing technology with secure media filtration. Possesses a large filter surface for its compact size and includes several a-la-carte options such as external heaters, bypass filters, and back-flush volume treatment unit.
- ♦ LMDP: The LMDP filter is functional and universally deployable for the filtration of lubrication oil and fuel in large engines. The LMDP filters can be used flexibly in pressure and suction mode for coarse and fine filtration down to 10 micron, creating savings on electricity, sludge handling and spare parts.



We design solutions for the rail industry and for the success of our customers by:

- ♦ Optimizing the use of technology with applications for improved equipment performance
- ♦ Using an efficient, timely customization process to fill the specific needs of railroad customers
- ♦ Preserving our reputation for reliability and flexibility to meet the demands of railroad customers
- ♦ Expanding globally to support our customers and stay current with new technologies
- ♦ Leveraging and sharing our knowledge to meet our customers' challenges
- ♦ Nurturing a creative, cooperative culture committed to providing the best solutions for our customers

Our goal is to be your fluid conditioning partner. Our expertise in filtration technology, our superior filter and element manufacturing capabilities, and our dedication to customer service and product support are the reasons we're considered experts in Advanced Fluid Conditioning Solutions®.

We are committed to providing the best available filter products to meet necessary cleanliness levels at a competitive price. As a cost-effective quality producer, we can work with your organization to supply contamination control technology or develop long-range pricing programs that can improve your company's bottom line.



For more information, please contact sisales@schroederindustries.com



Rail Solutions:
Learn More

