

In-Line Water Absorbing Diesel Fuel Bag Filter

BDA

Applications



POINT OF USE
FUEL DISPENSING



FLEET FILL / BULK FUEL
TRANSFER



BULK FUEL
UNLOADING



BULK TANK
KIDNEY LOOP /
RECIRCULATION

Application Introduction:

The BDA provides a high capacity water absorbing solution for diesel fuel in a familiar process filtration housing configuration. The BDA combines the high volume particulate filtration performance of a bag housing element with a high capacity water absorbent media to provide an economic solution for particulate and water removal in diesel fuel systems. The BDA can be used for dispensing or kidney-loop installations. The filter is designed for use with standard diesel fuel as well as bio-based blends.

Features and Benefits

- One housing and bag filter provides both high capacity particulate and water removal performance
- A particulate filtration rating of 10 µm is standard
- Housings are high quality stainless steel, CE Marked vessels
- A positive bag seating mechanism helps to minimize the risk of seal bypass
- Fixed legs with height and 360° rotational adjustment allow for various mounting options



Model no. of filter in photograph is:
BDA-H-2-V-P32

Markets



INDUSTRIAL



MOBILE
VEHICLES



MARINE



MINING
TECHNOLOGY



AGRICULTURE



POWER
GENERATION



COMMON RAIL
INJECTOR SYSTEMS



FLEET



RAILROAD



BULK FUEL
FILTRATION

35 or 70 gpm ICF
132 or 265 BDF
L/min

145 psi

10 bar

BDFA

BDA

GHPF

GHCF

QCF

BDS

BDS2

BDS3

BDS4

LVH-F

LVH-C

BDFC

BDFP

BDC

HDP

HDPD

EPM

EPTT

EWU

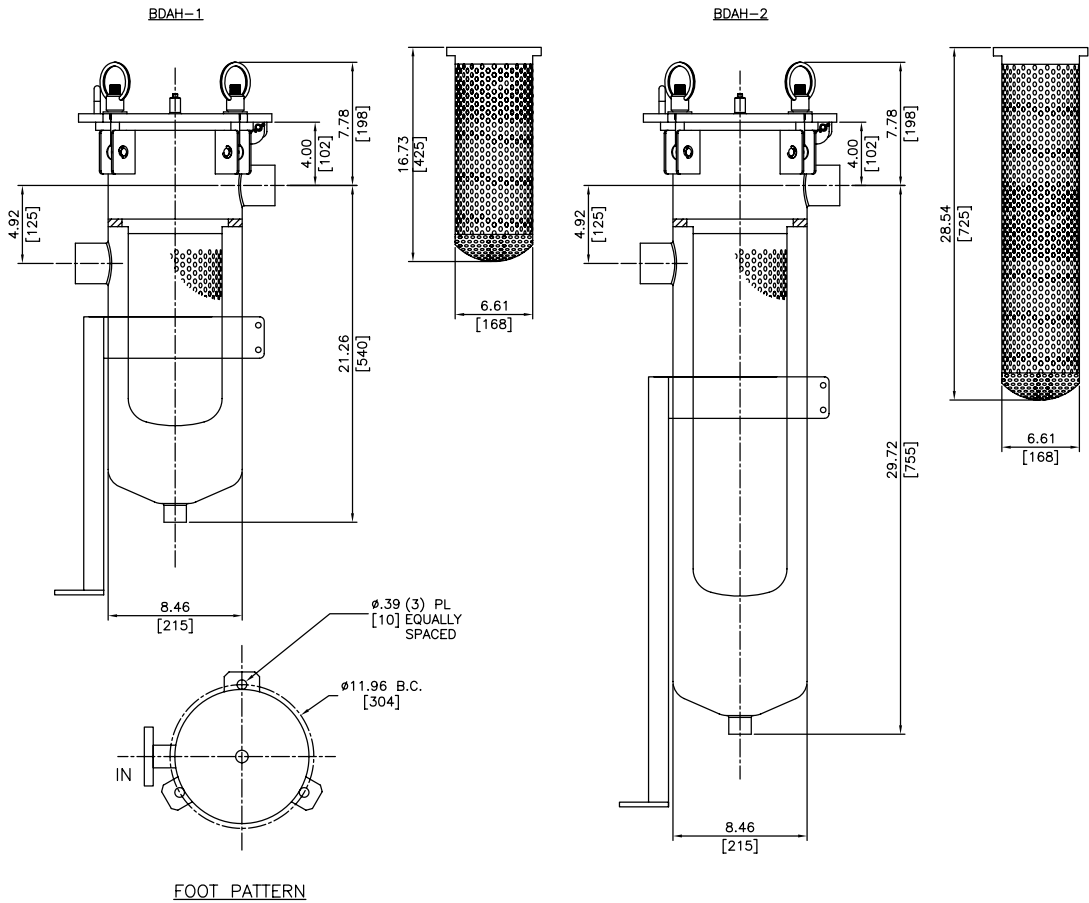
BCC

Filter Housing Specifications

Max Flow Rating:	BDAH1: 35 gpm (132 L/min)	BDAH2: 70 gpm (265 L/min)
Inlet/Outlet Connection:	2" NPTF 2" SAE 4-Bolt Flange Code 61 2" BSPF	
Max. Operating Pressure:	145 psi (10.3 bar)	
Recommended Element Change Differential Pressure:	22 psi (1.5 bar)	
Max. Element Differential Pressure:	55 psi (4 bar)	
Temp. Range:	-20°F to 176°F (-29°C to 80°C)	
Available Gauge Porting:	(2) ¼" BSP	
Materials of Construction:	304 Stainless Steel	
Weight:	BDAH1: 66 lbs. (30 kg)	BDAH2: 84 lbs. (38 kg)
Element Change Clearance:	Min. required 14" (356 mm)	

*Note: Elements sold separately

BDA-H



Metric dimensions in ().
Dimensions shown are inches [millimeters] for general information and overall envelope size only.
For complete dimensions please contact Schroeder Industries to request a certified print.

In-Line Water Absorbing Diesel Fuel Filter

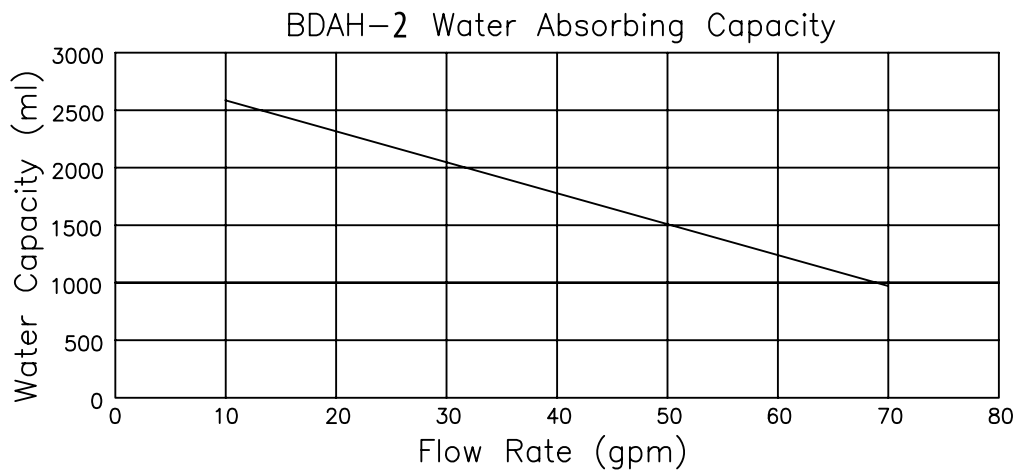
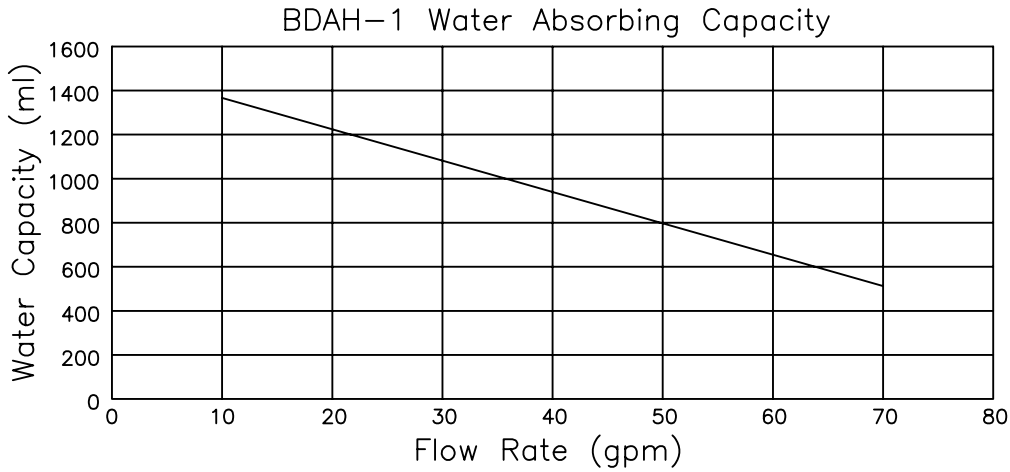
BDA

Water Absorbing Bag Element	Bag Housing Size	Micron Rating	Bag Element Dimensions
FA210P1PW	Size 1	10 μ m	7" (178 mm) O.D. x 17" (432 mm) long
FA210P2PW	Size 2	10 μ m	7" (178 mm) O.D. x 32" (813 mm) long

Replacement Element Information
 Elements Sold Separately

- ICF
- BDF
- BDFA
- BDA**

- GHPF
- GHCF
- QCF
- BDS
- BDS2
- BDS3
- BDS4
- LVH-F
- LVH-C
- BDFC
- BDFP
- BDC
- HDP
- HDPD
- EPM



Pressure Drop Information: $\Delta P_{\text{housing}} < 0.5 \text{ psi}$

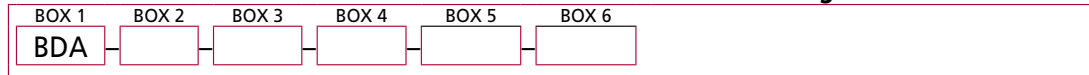
Pressure Drop Information
 Based on Flow Rate and Viscosity

- EPTT
- EWU
- BCC

Notes

Filter Model Number Selection

How to Build a Valid Model Number for a Schroeder BDA housing without element:



Example: *NOTE: One option per box*



BOX 1	BOX 2	BOX 3	BOX 4
Filter Series	Product Configuration	Bag Element Size	Housing Seal Material
BDA	H = Housing	1 = Size 1 2 = Size 2	V = Viton®

BOX 5	BOX 6
Porting	Filter Indicator
P32 = 2" NPTF F32 = 2" SAE 4-Bolt Flange, Code 61 B32 = 2" BSPF	Omit = None DPG = Differential Pressure Gauge

NOTES:

Bag Filters sold separately and are listed below

Element Part Number Selection

Water Absorbing Element	Bag Housing Size	Max Flow Rate gpm (L/min)	Micron Rating	Bag Element Dimensions
FA210P1PW	Size 1	35 (132)	10 μm	7" (178 mm) O.D. x 17" (432 mm) long
FA210P2PW	Size 2	70 (265)	10 μm	7" (178 mm) O.D. x 32" (813 mm) long

Fluid Compatibility

Fuel Oils

- ULSD15, low sulfur diesel and high sulfur diesel
- Biodiesel blends
- Synthetic diesel and blends
- No. 2 fuel oil and heating oil